

HONDA



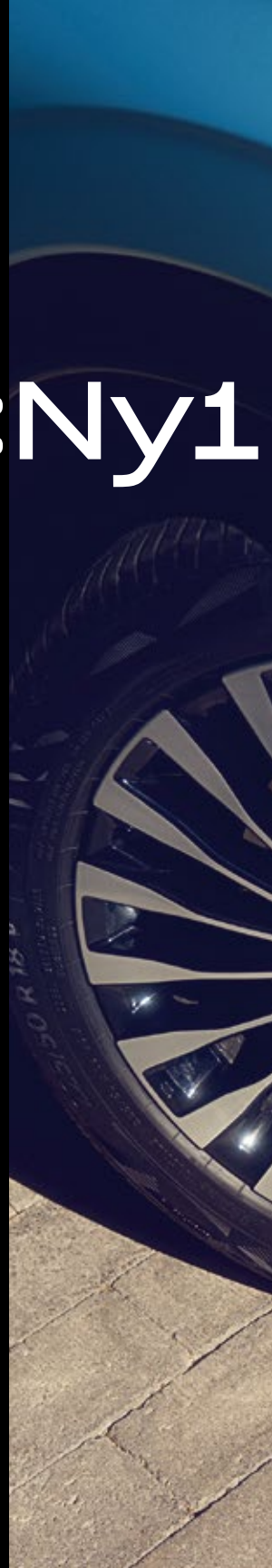
All-New Electric

e:NY1

Introducing the Honda e:Ny1

The all-new, all-electric e:Ny1: a smart, agile and exciting SUV designed for the way you live your life. Quiet, smooth and engaging to drive, it delivers **performance, comfort and usability** – with zero emissions.

04	ELECTRIC
10	PERFORMANCE
16	TECHNOLOGY
20	EXTERIOR
24	INTERIOR
30	SAFETY
34	STYLE
38	YOUR e:Ny1





Model shown is the Honda e:NY1 Full Electric Advance in Aqua Topaz Metallic.
Left hand drive images are shown for illustration purposes only. In the UK, vehicle will be right hand drive.
For more information on which grades this and other features are available on, please refer to the specification pages 52-55.



Electric



Model shown is the Honda e:NY1 Full Electric Advance in Aqua Topaz Metallic.
Left hand drive images are shown for illustration purposes only. In the UK, vehicle will be right hand drive.
For more information on which grades this and other features are available on, please refer to the specification pages 52-55.

Pure electric, pure enjoyment

The e:Ny1's powerful yet compact 68.8kWh battery provides a range of up to 256 miles on a single charge. **Recharging is quick, simple and flexible**, with a 60 mile charge achieved in approximately 11 minutes*, and fast charging in approximately 45 minutes* (10-80%).

The innovative charging inlet is easily located behind a retracting panel at the front of the car, whilst an intelligent charge indicator, integrated under the bonnet line, communicates the charging status.

01

256 MILES ZERO
EMISSIONS RANGE

02

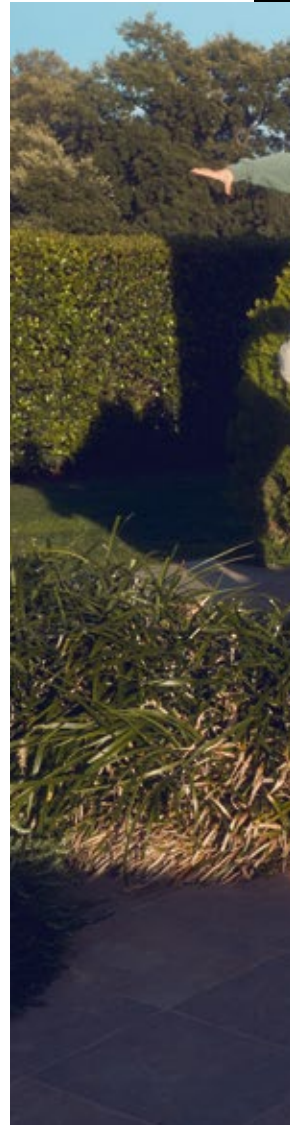
60 MILES CHARGE
IN 11 MINUTES*

*When using a 100kW charger.

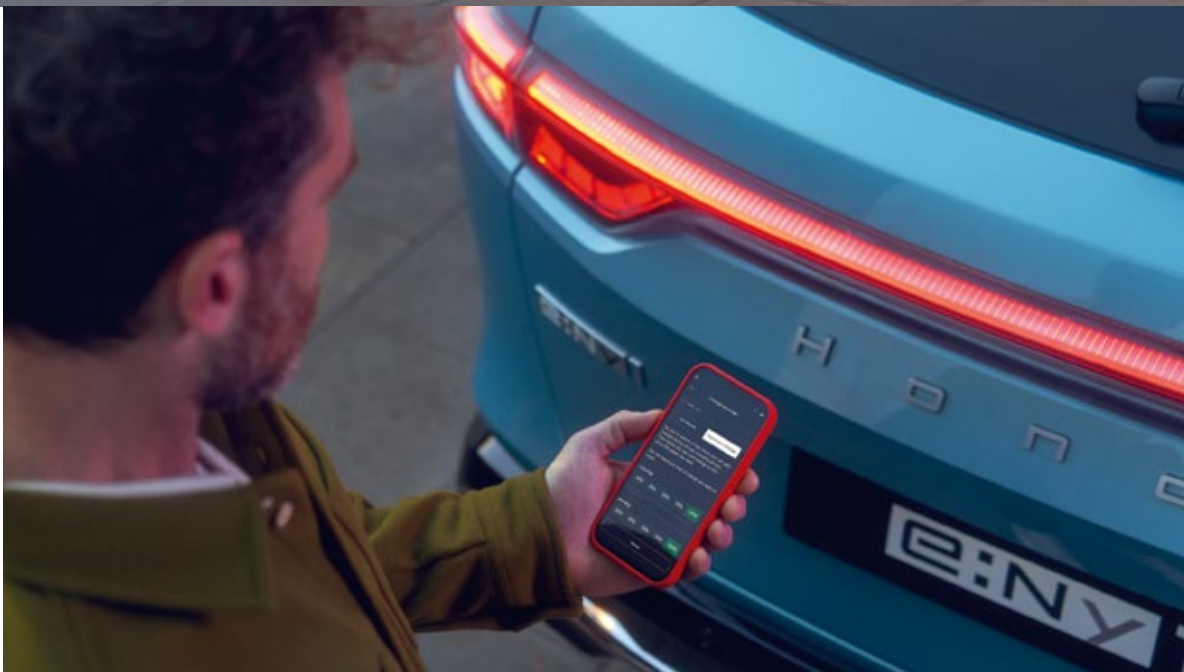
Model shown is the Honda e:Ny1 Full Electric Advance in Aqua Topaz Metallic.

Left hand drive images are shown for illustration purposes only. In the UK, vehicle will be right hand drive.

For more information on which grades this and other features are available on, please refer to the specification pages 52-55.









Everyday electric

High tech doesn't have to mean highly complicated, which is why we've designed the new e:Ny1 to be **an everyday car and a joy to drive**. Ready and charged on your driveway every morning, it's the perfect car for the city, especially now that so many urban areas have designated ultra low emission zones.

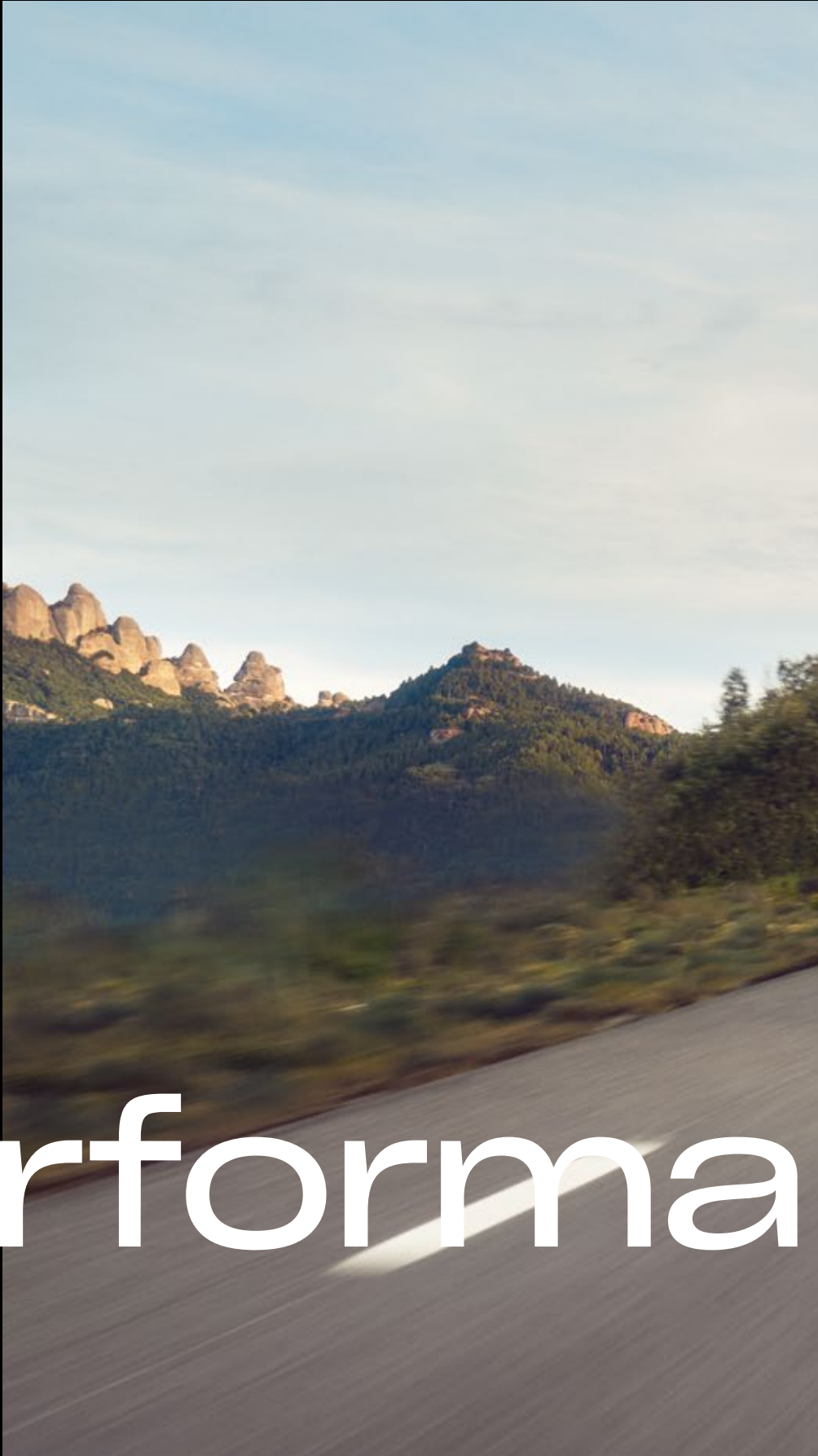
Remote connectivity through the My Honda+ App makes life even easier. It allows you to check the battery range before you set off, schedule and monitor charging, or even pre-set the temperature of your car before you get in, ensuring you feel comfortable from the very start of every journey.

01

EASY TO DRIVE WITH
INTUITIVE CONTROLS

02

ZERO EMISSIONS,
PERFECT FOR THE CITY



Performa



nice

Model shown is the Honda e:Ny1 Full Electric Advance in Aqua Topaz Metallic.
Left hand drive images are shown for illustration purposes only. In the UK, vehicle will be right hand drive.
For more information on which grades this and other features are available on, please refer to the specification pages 52-55.





Power and performance

The e:Ny1 incorporates Honda's latest electric powertrain, delivering exceptional drivability and provides around 204PS of output with 310Nm of torque, meaning you don't just maximise the instant acceleration but optimise your range too. A clever regenerative braking system also helps recharge the battery and extend its electric range.

Three distinct driving modes – Econ, Normal and Sport – allow you to select the right balance of power, efficiency and handling you require. From sweeping country roads, to long motorway stretches and tight city centres, the e:Ny1 has the agility and performance to tackle them all.

01

204PS OUTPUT WITH
310NM OF TORQUE

02

ECON, NORMAL AND
SPORT DRIVING MODES

Smooth driving experience

With performance engineered to be enjoyed by the driver and passengers alike, the e:Ny1 has advanced stability and handling, and delivers a **smooth, quiet and agile driving experience.**

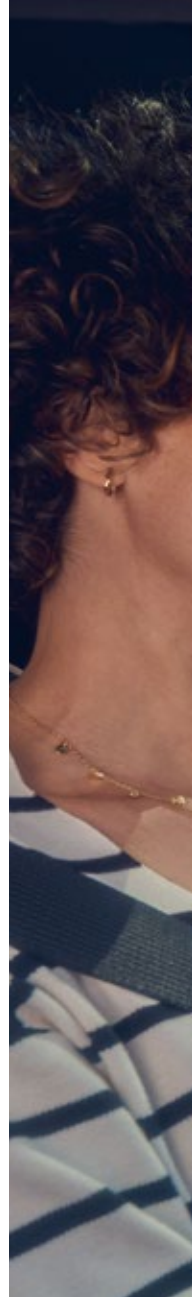
Our human-centric design philosophy can be seen in the thoughtful details such as an 8-way power-adjustable driver's seat and our interior Air Diffusion System for the enhanced comfort of everyone.

01

8-WAY DRIVER'S
SEAT ADJUSTMENT

02

SMOOTH AND QUIET
PERFORMANCE







Technolog



by

Model shown is the Honda e:Ny1 Full Electric Advance in Aqua Topaz Metallic. Left hand drive images are shown for illustration purposes only. In the UK, vehicle will be right hand drive. For more information on which grades this and other features are available on, please refer to the specification pages 52-55.



Life is better connected

Designed to fit seamlessly into your life, the e:Ny1 features a 15.1" Honda CONNECT infotainment system. This intuitive display gives you full control of your infotainment and driving functions, including navigation, power flow meter and reversing camera. Apple CarPlay and Android Auto comes as standard to connect your devices. Driving information is delivered through the digital 10.2" driver display which is fully customisable to suit your driving preferences. Vehicle status, safety information and charge data are all there for you, at a glance.

And with the Handsfree Power Tailgate* you can open the boot remotely with the key fob, then once you're finished loading, just tap the 'Walk Away Close' button, and watch as it automatically closes the tailgate and locks the car as you walk away.

01

**15.1" HONDA CONNECT
INFOTAINMENT SYSTEM**

02

WIRELESS CHARGING

*Select grades only.

Model shown is the Honda e:Ny1 Full Electric Advance in Aqua Topaz Metallic.

Left hand drive images are shown for illustration purposes only. In the UK, vehicle will be right hand drive.

For more information on which grades this and other features are available on, please refer to the specification pages 52-55.



Exterior



Model shown is the Honda e:NY1 Full Electric Advance in Aqua Topaz Metallic.
Left hand drive images are shown for illustration purposes only. In the UK, vehicle will be right hand drive.
For more information on which grades this and other features are available on, please refer to the specification pages 52-55.



Smart and sophisticated

The e:Ny1's smooth and flowing styling combines dynamics with functionality. Its simple grille-less design, sleek headlights, full-width LED tail lights and sequential indicators give the new e:Ny1 **a streamlined, sophisticated character.**

The unique and stylish 18" alloys and a white Honda H badge are the finishing touches that really set the e:Ny1 apart.

01

WRAP-AROUND LED
TAIL LIGHTS

02

STYLISH 18"
ALLOYS



Interior



Model shown is the Honda e:NY1 Full Electric Advance in Aqua Topaz Metallic.
Left hand drive images are shown for illustration purposes only. In the UK, vehicle will be right hand drive.
For more information on which grades this and other features are available on, please refer to the specification pages 52-55.

Feel good inside

Spacious and uncluttered, the interior has been created to achieve **a comfortable and welcoming space**, with thoughtful design details and the use of premium materials throughout. Enjoy seamless audio integration via our six-speaker sound system, for crystal-clear sound on the go.

Your comfort is our priority, so the ergonomically designed front seats are heated, as is the steering wheel*, whilst our Air Diffusion System ensures an enjoyable experience all year round. The feeling of space is accentuated by a large panoramic glass roof* and a simple, visor-less, full-width dashboard.

01

HEATED
STEERING WHEEL*

02

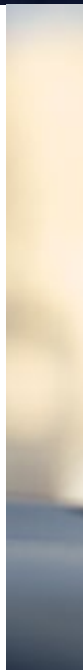
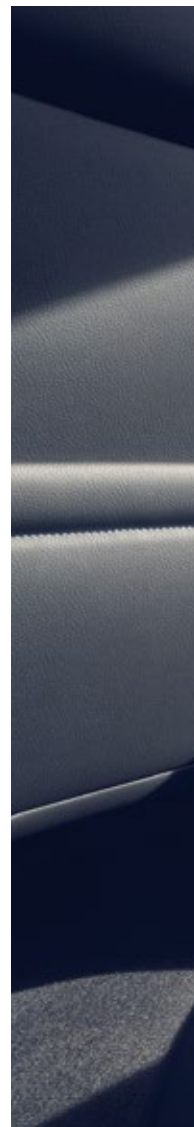
PANORAMIC
GLASS ROOF*

*Select grades only.

Model shown is the Honda e:Ny1 Full Electric Advance in Aqua Topaz Metallic.

Left hand drive images are shown for illustration purposes only. In the UK, vehicle will be right hand drive.

For more information on which grades this and other features are available on, please refer to the specification pages 52-55.







A space to enjoy

We have created a flexible and practical space that fits with your life. The e:Ny1's spacious 361 litre cargo area can expand to 1,176 litres with the seats down and, to increase storage capacity further, it also has a two-stage boot floor. There's even a dedicated space for the charging cables, tucked away underneath the boot floor, whilst its wide tailgate aperture and low, flat cargo floor provide easy access for loading heavy items.

01

CHARGING CABLE
STORAGE SPACE

02

UP TO 1,176 LITRES
OF CARGO AREA*

*Rear seats down (litres, VDA method).

Model shown is the Honda e:Ny1 Full Electric Advance in Aqua Topaz Metallic.

Left hand drive images are shown for illustration purposes only. In the UK, vehicle will be right hand drive.

For more information on which grades this and other features are available on, please refer to the specification pages 52-55.



Safety



Model shown is the Honda e:Ny1 Full Electric Advance in Aqua Topaz Metallic.
Left hand drive images are shown for illustration purposes only. In the UK, vehicle will be right hand drive.
For more information on which grades this and other features are available on, please refer to the specification pages 52-55.

Honda safety

We are committed to keeping you, your passengers and pedestrians safe, which is why we've packed a great deal of active and passive safety technology into the e:Ny1.

This includes Honda SENSING; our intelligent suite of advanced safety features that will assist you as you drive. Safety features include:

Collision Mitigation Braking System

If there is the possibility of a collision with a vehicle or a pedestrian, this feature will alert you to the danger as well as reducing your speed to help minimise the severity of any impact.

Lane Departure Warning

If the car moves out of its lane without you activating the indicator, then alerts will flash and sound to help bring your attention to correcting the lane drift.

Road Departure Mitigation

A windscreen-mounted camera detects whether the car is veering off the road and applies subtle steering corrections to keep your vehicle in its lane. In certain conditions, it can also apply braking force.

Lane Keeping Assist System

Helps keep you in the middle of your lane, providing a less stressful driving experience by reducing the need for steering correction movements and driving effort on the motorway.

Adaptive Cruise Control with Low-Speed Following

This function maintains a set cruising speed and following distance relative to the vehicle in front of you. If the detected vehicle comes to a stop, the function will decelerate and stop your vehicle without you having to keep your foot on the brake. Once the car in front starts moving again, simply tap the accelerator to resume the operation.

Multi-View Camera System*

Helps expand the driver's awareness of what's in front, alongside or behind the car and reduce blind spots, with images displayed on the central touchscreen.

Honda Parking Pilot*

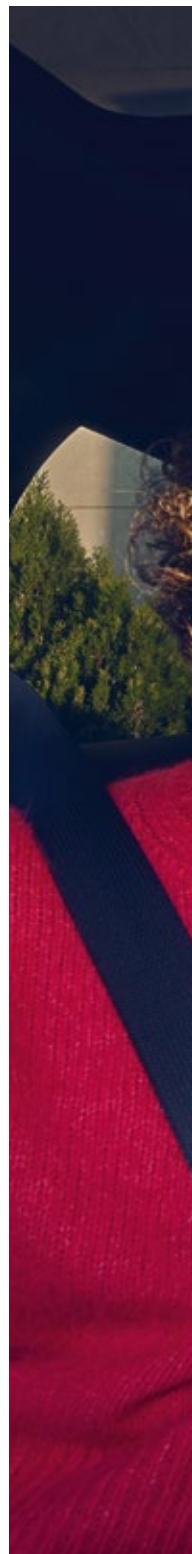
An automatic, hands-free, one-touch parking aid to help you safely fit into the tightest spaces. A combination of sonar radar and multi-view cameras also enables the e:Ny1 to detect parking spaces even when they are not defined by bay lines.

*Select grades only.

Model shown is the Honda e:Ny1 Full Electric Advance in Aqua Topaz Metallic.

Left hand drive images are shown for illustration purposes only. In the UK, vehicle will be right hand drive.

For more information on which grades this and other features are available on, please refer to the specification pages 52-55.







Style



Model shown is the Honda e:Ny1 Full Electric Advance in Aqua Topaz Metallic.
Left hand drive images are shown for illustration purposes only. In the UK, vehicle will be right hand drive.
For more information on which grades this and other features are available on, please refer to the specification pages 52-55.



Advanced and intelligent

The new e:Ny1 has been created with inspired styling and a spacious, technologically advanced interior. Every detail, from its simple, smooth white Honda badge to its 15.1" central display screen and soft ambient lighting, embodies our new and exciting future that you can enjoy today.

Model shown is the Honda e:Ny1 Full Electric Advance in Aqua Topaz Metallic.
Left hand drive images are shown for illustration purposes only. In the UK, vehicle will be right hand drive.
For more information on which grades this and other features are available on, please refer to the specification pages 52-55.

Your
e:Ny1.



Model shown is the Honda e:Ny1 Full Electric Advance in Aqua Topaz Metallic.
Left hand drive images are shown for illustration purposes only. In the UK, vehicle will be right hand drive.
For more information on which grades this and other features are available on, please refer to the specification pages 52-55.



Elegance

The **Elegance** comes fully equipped with a range of advanced features to enhance your driving experience:

- Honda SENSING Safety Features
- Honda CONNECT with Navigation (15.1" Touchscreen, AM/FM/DAB Digital Radio, Apple CarPlay and Android Auto, Live Traffic Info)
- x6 Speakers
- x2 Front and x2 Rear USB Ports
- Wireless Charging
- 18" Black Cut Alloys
- Heated Front Seats
- Leather Steering Wheel
- Synthetic Leather Upholstery
- Dual-zone Automatic Climate Control
- Rear-view Camera
- Parking Sensors (x4 Front and x4 Rear)
- Under-boot Charging Cable Storage
- Privacy Glass



Advance

As well as many of the features available on the Elegance grade, the **Advance** grade includes:

- Heated Steering Wheel
- Multi-View Camera System
- x4 Additional Parking Sensors
- Honda Parking Pilot
- Handsfree Power Tailgate
- Premium Audio
- Panoramic Glass Roof



BLACK SYNTHETIC LEATHER

*Select grades and paint colours only.
Model shown is the Honda e:Ny1 Full Electric Advance in Aqua Topaz Metallic.
Left hand drive images are shown for illustration purposes only. In the UK, vehicle will be right hand drive.
For more information on which grades this and other features are available on, please refer to the specification pages 52-55.

High-quality comfort

The sporty and supportive seats are available in a choice of light grey or black synthetic leather and feature a beautifully crafted dynamic quilting design with contrasting details and a vivid blue stitching accent.

	Black Synthetic Leather	Light Grey Synthetic Leather*
ELEGANCE	●	
ADVANCE	●	●



Colour your life

Choose from a range of contemporary colours that reflect your personality and the dynamic design of the e:Ny1.



AQUA TOPAZ METALLIC



VERMILLION RED PEARL



PLATINUM WHITE PEARL



CRYSTAL BLACK PEARL



URBAN GREY PEARL

Model shown is the Honda e:Ny1 Full Electric Advance.
Left hand drive images are shown for illustration purposes only. In the UK, vehicle will be right hand drive.
For more information on which grades this and other features are available on, please refer to the specification pages 52-55.

Charging accessories

1. Honda Power Charger

The Honda Power Charger offers a charging capacity of up to 22kW three phase and 7.4kW single phase for faster home charging. There are three variants available: the Honda Power Charger, S and S+, with and without shutter (depending on country legislation).

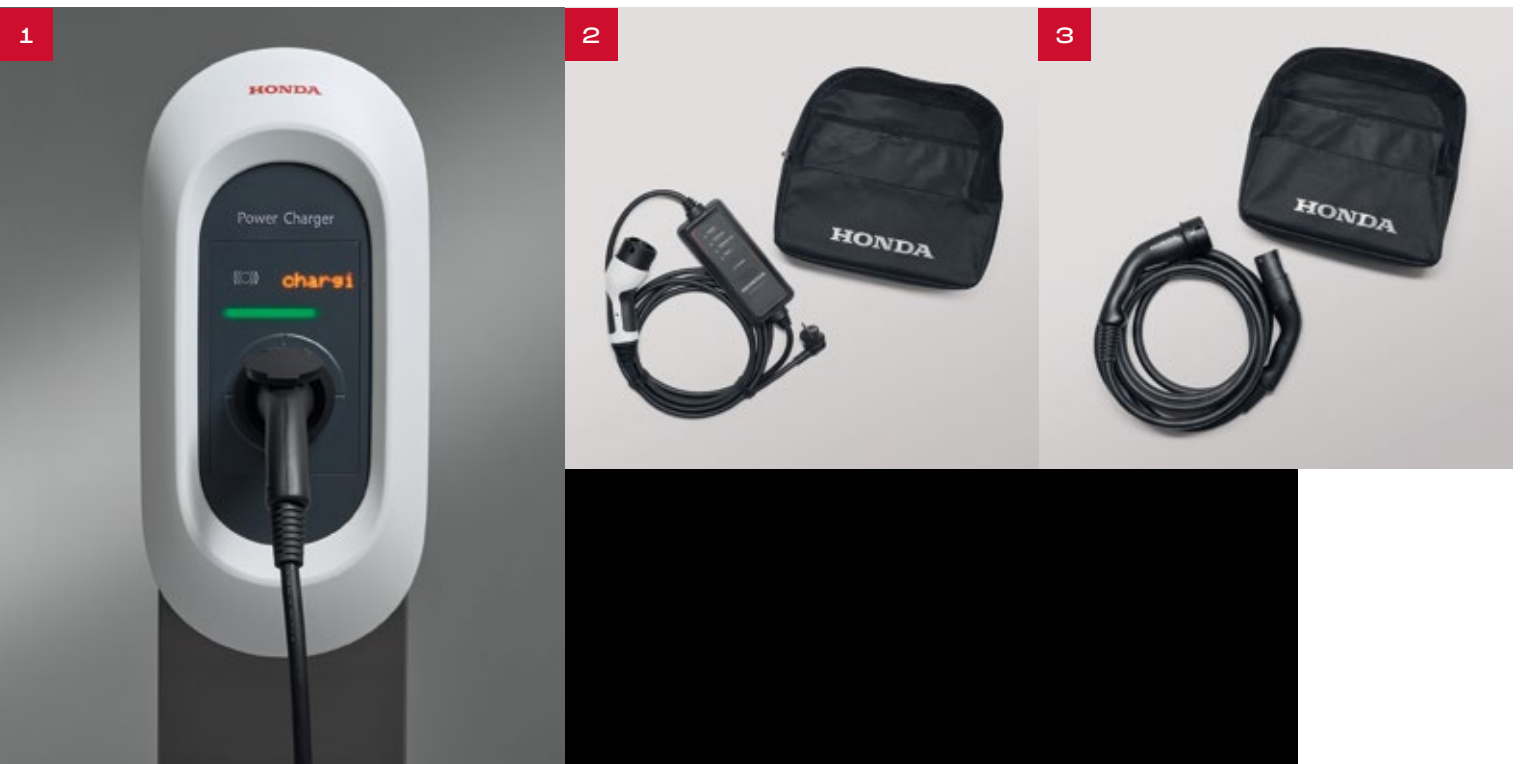
Also available: MID and M&E compliant variants for billing purposes.

2. Mode 2 Charging Cable

Portable Electric Vehicle Supply Equipment (P-EVSE) for grid-to-vehicle charging. A protective storage bag is included.

3. Mode 3 Charging Cable

Charging cable to connect your vehicle to a Honda Power Charger or public charger (single-phase and three-phase variants are available). A protective storage bag is included.





Key features

Whether used at home or in business, Honda Power Chargers deliver unrivalled safety, efficiency and ease of use.



QUALITY



SAFETY



EASE OF INSTALLATION



ERGONOMIC DESIGN



FAST, RELIABLE CHARGING



SMART HOME TECHNOLOGY



USER AUTHORISATION



MONITOR ENERGY USAGE

Left hand drive images are shown for illustration purposes only. In the UK, vehicle will be right hand drive.

Obscura Black Pack

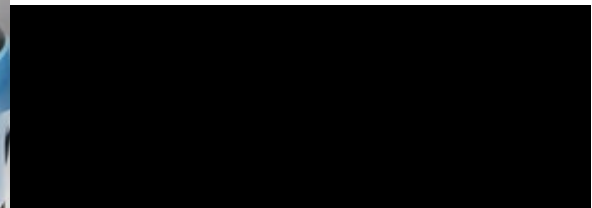
The Obscura Black Pack gives the car a sporty and expressive character by adding black-coloured accessories. **This pack includes** a front grille with parking sensors and a tailgate spoiler extension.



FRONT GRILLE

Distinguish the complete front look of your e:Ny1 by replacing the body-coloured charging lid and garnish with a painted shiny black front grille to give your car a more sporty and stylish character.

Items in the pack are also available separately.
Alloys shown are the HR1811 alloy wheels, these are optional and sold separately.
Model shown is the Honda e:Ny1 Full Electric Advance in Aqua Topaz Metallic.
Left hand drive images are shown for illustration purposes only. In the UK, vehicle will be right hand drive.



TAILGATE SPOILER EXTENSION

If a distinguished sporty look is what you want, this shiny black spoiler extension is exactly what you need. The spoiler extension is specifically developed to complement the standard tailgate spoiler.

Alloys



02

ALLOY WHEEL 18" HR1812

The HR1812 alloy wheel features a diamond-cut A-surface with a shiny clear coat and Gunpowder Black windows.



01

ALLOY WHEEL 18" HR1811

The HR1811 alloy wheel comes in full Gunpowder Black with a shiny clear coat.



03

ALLOY WHEEL 18" HR1813

The HR1813 alloy wheel comes in full Gunpowder Black with a shiny clear coat and an Ilmenite Titanium colour accent.

	Elegance	Advance
Engine		
Engine Type	BEV	BEV
EV Battery Capacity (kWh)	68.8	68.8
Phase	1 & 3	1 & 3
AC 11 kW 10%-80% (Approx.)	6 hours	6 hours
Charging Port Type	CCS	CCS
DC Fast Charge Max. (kW)	78	78
DC Fast Charge 10%-80% (Approx.)	45 mins	45 mins
DC Fast Charge 100km (Approx.)	11 mins	11 mins
Range (WLTP Combined [km])	412	412
EV Operation Efficiency (kWh/100km)	18.2	18.2
Electric Motor Type	AC	AC
On Board Charger Capacity	11kW AC	11kW AC
Battery – Chemistry	Lithium Ion	Lithium Ion
Battery – Number of Cells	96	96
Battery – Nominal Voltage	370	370
Performance		
Electric Motor Maximum Power (kW[PS])	150 (204)	150 (204)
Electric Motor Maximum Torque (Nm)	310 @ 0-4621	310 @ 0-4621
0 → 100km/h (Seconds)	7.6	7.6
Max. Speed (km/h)	160	160
Sound level: Drive-by (dB)	64	64
Dimensions		
Overall Length (mm)	4387	4387
Overall Width (mm)	1790	1790
Overall Height – Unladen (mm)	1584	1584
Wheelbase (mm)	2607	2607
Tread Front (mm)	1539	1539
Tread Rear (mm)	1540	1540
Ground Clearance – Non-load (mm)	142	142
Ground Clearance – with Full Load (mm)	111.3	112.6
Turning Circle – at Body (m)	11.6	11.6
Turning Circle – at Wheel Centre (m)	5.7	5.7
Steering Wheel – Lock to Lock (Wheel Turns)	2.59	2.59
Capacity		
Seating Capacity (Persons)	5	5
Boot Capacity – Rear Seat Up (Litres, VDA method)	361	344
Boot Capacity – Rear Seat Down Load to Roof (Litres, VDA method)	1176	1136
Boot Capacity – Rear Seat Down Load to Window (Litres, VDA method)	801	784

Key:

♦ Standard / – Not available

¹Economy & Emissions figures (WLTP) Range: Power consumption in kWh/100km: 18.2; CO₂-emission combined (g/km): 0. **Electric range combined: 412km.** The Honda e:NY1 is a battery electric vehicle requiring mains electricity for charging. Zero emissions while driving. Electric range figures may not reflect real-life driving results, which will depend upon a number of factors including the starting charge of the battery, accessories fitted (post-registration), variations in weather, driving styles and vehicle load.

Elegance

Advance

Weight

Kerb Weight (kg)	1733	1756
Max. Permissible Weight (kg)	2080	2080
Max. Permissible Axle Weight – Front/Rear (kg)	1065/1030	1065/1030

Safety

ABS (Anti-Lock Braking System)	◆	◆
Airbags – Front Driver and Passenger	◆	◆
Airbags – Passenger SRS Airbag with Cut Off Switch	◆	◆
Airbags – Side (Front)	◆	◆
Airbags – Side Curtain (Front and Rear)	◆	◆
Brake Assist (BA)	◆	◆
Collision Mitigation Braking System	◆	◆
Collision Mitigation Throttle Control	◆	◆
Cruise Control – Adaptive	◆	◆
Deflation Warning System (DWS)	◆	◆
Driver SRS Airbag (Single Stage Inflation)	◆	◆
eCall (Europe)	◆	◆
Electronic Brakeforce Distribution (EBD)	◆	◆
Emergency Stop Signal	◆	◆
Forward Collision Warning	◆	◆
Front and Rear Seat Belts with Emergency Locking Retractor (ELR)	◆	◆
ISOFIX Points/I-SIZE	◆	◆
Lane Departure Warning (LDW)	◆	◆
Lane Keeping Assist System	◆	◆
Low Speed Following	◆	◆
Road Departure Mitigation	◆	◆
Traffic Jam Assist	◆	◆
Traffic Sign Recognition System	◆	◆
Vehicle Stability Assist (VSA)	◆	◆
Whiplash Lessening Front Headrests	◆	◆

Security

Immobiliser System	◆	◆
Remote Central Locking with 2 Key Fobs	◆	◆
Security Alarm System	◆	◆
Parcel Shelf	◆	◆

	Elegance	Advance
Function and Technology		
Electric Parking Brake with Automatic Brake Hold	◆	◆
Electric Power Steering (EPS)	◆	◆
Hill Start Assist (HSA)	◆	◆
10.2" Multi Info Display	◆	◆
Regenerative Braking Strength Control (Paddle)	◆	◆
Comfort and Convenience		
Dual Zone Automatic Climate Control	◆	◆
Air Conditioning – Rear Vent	◆	◆
Auto Dimming Rear-view Mirror	◆	◆
Auto Wipers	◆	◆
Cargo Net Hook	◆	◆
Door Mirrors – Electrically Adjustable and Folding/Heated with Exterior Mirror Tilt for Reverse	◆	◆
Multi-View Camera System	–	◆
Electric Windows Front and Rear	◆	◆
Front Accessory Socket	◆	◆
Front Seat – Driver Electrical Adjustment (8-way)	◆	◆
Front Driver Seat Pockets	–	Driver only
Heated Front Seats	◆	◆
Heated Steering Wheel	–	◆
Key Fob Operated Windows and Mirrors	◆	◆
Under-boot Charging Cable Storage	◆	◆
Parking Sensors (x4 Front and x4 Rear)	◆	–
Parking Sensors (x4 Front, x4 Rear and x4 Side)	–	◆
Honda Parking Pilot	–	◆
Handsfree Power Tailgate	–	◆
Rear-view Camera	◆	◆
Sun Visor Vanity Mirrors	◆	◆
Tilt and Telescopic Steering Wheel	◆	◆
Wheels		
Alloy Size and Design	18" Black Cut Alloys	18" Black Cut Alloys
Tyre Size	225 / 50 R18	225 / 50 R18
White H Badge Wheel Caps	◆	◆
Tyre Repair Kit	◆	◆
Interior Trim		
Black Interior Panels	◆	◆
Chrome Door Handles	◆	◆
Steering Wheel – Leather	◆	◆
Upholstery – Synthetic Leather	◆	◆
Exclusive Styling of Silver Trim with Blue Lighting in Door and Dash Areas	◆	◆

Elegance

Advance

Interior Lights

Ambient Light (Roof)	◆	◆
Courtesy Light	◆	◆
Map Light (Front)	◆	◆
Meter Illumination	◆	◆
Rear Reading Light	◆	◆
Boot Light	◆	◆

Audio and Communications

Bluetooth™ Hands Free Telephone (HFT)	◆	◆
DAB Digital Radio	◆	◆
Honda CONNECT with Navigation (15.1" Touchscreen, AM/FM/DAB Digital Radio, Apple CarPlay and Android Auto, Live Traffic Info)	◆	◆
x6 Speakers	◆	◆
Premium Audio	–	◆
Front Tweeter	◆	◆
Steering Wheel Remote Audio Controls	◆	◆
USB Front Number	1 USB A and 1 USB C	1 USB A and 1 USB C
USB Rear Number	2 USB C	2 USB C
Wireless Apple CarPlay	◆	◆
Wireless Charging	◆	◆

Exterior

Shark Fin Antenna	◆	◆
Exterior Door Handle in Body Colour Finish	◆	◆
Panoramic Glass Roof	–	◆
Privacy Glass	◆	◆
Spoiler	◆	◆
White Honda Badging	◆	◆
High Gloss Window Garnish	◆	◆

Exterior Lights

Auto Headlights	◆	◆
LED Daytime Running Light	◆	◆
LED Front Fog Light	◆	◆
15s Headlight Auto On/Off Timer (Coming Home/Leaving Home Function)	◆	◆
LED Headlight	◆	◆
High Beam Support System (HSS)	◆	◆
Smoke and Clear Lens Rear Lights	◆	◆
LED Sequential Front Turn Lights	◆	◆

HONDA



These specification details do not apply to any particular product which is supplied or offered for sale. The manufacturers reserve the right to vary their specifications, including colours, with or without notice and at such times in such manner as they think fit. Major as well as minor changes may be involved. Every effort, however, is made to ensure the accuracy of the particulars contained in this brochure. This publication shall not constitute in any circumstances whatsoever an offer by the Company to any person. All sales are made by the Distributor or Dealer concerned subject to and with the benefit of the standard Conditions of Sale and Warranty given by the Distributor or Dealer, copies of which may be obtained from them on request. This publicity material applies to the UK only Trade Descriptions Act (1968). Whilst efforts are made to ensure specification accuracy, brochures are prepared and printed several months in advance of distribution and consequently cannot always immediately reflect either changes in specification or in some isolated cases the provision of a particular feature. Customers are always advised to discuss specification details with the supplying Dealer especially if your model selection is dependent upon one of the features advertised.

Honda (UK) – Cars Cain Road, Bracknell, Berkshire, RG12 1HL.
Honda Contact Centre – Telephone: 0845 200 8000 www.honda.co.uk A division of Honda Motor Europe Ltd.
No. 857969 Registered in England.



Honda sources paper responsibly from manufacturers within the EU.
Please don't bin me. Pass me onto a friend or recycle me.



BLUE SKIES FOR
OUR CHILDREN