

The Kia Stonic.



Movement that inspires



Garage
Stair B
Level

6

Interior.

Share the experience.

Be true to your identity.

Sculpted contours immediately please the eye and the senses, making driving fresh and fun. The D-cut steering wheel is shaped to stay clear of your legs, whilst the other controls are designed to place you and your demands in perfect unison (grade dependent). From the moment you sit inside you'll discover a whole host of specially designed features: a GT-line badged steering wheel with perforated leather and white stitching, a black carbon-finish dashboard, ergonomic seats in black cloth and faux leather with white stitching and piping, 4.2" colour supervision cluster and an 8" touchscreen navigation system with reversing camera display,



8" colour touchscreen navigation system. Informed, in control with sophisticated navigation guidance and a range of connected features powered by our free seven-year Kia Connect (UVO) services.



Manual transmission. The 6-speed transmission offers quick, smooth gear changes and gear ratios that are matched to engine torque curves, boosting power and efficiency.

Images are for illustrative purposes only and not up to the UK specifications.



4.2-inch colour supervision cluster. Between the speedometer and tachometer, the screen displays vehicle status, audio information and gives you access to vehicle setting menus.



Rear USB charging port. A USB jack at the rear of the centre console lets rear-seat occupants charge their devices too.



USB front charger. A USB outlet lets you charge your mobile phone or other compatible devices.

Comfort above all.

Whatever your needs, the Stonic offers a wealth of equipment to help make it feel like it was custom-made for you from the start.



Rain sensor. Your front wipers activate when rain is detected on your windscreen (grade dependent).



Overhead console lamp with sunglasses case. An overhead console helps you stay organised and keeps your sunglasses just where expect them to be.



Centre console armrest. The comfortable sliding armrest is integrated with a console that includes two cupholders and a storage compartment.



Heated steering wheel. Give your fingers some welcome respite on cold winter days thanks to the Stonic's heated steering wheel (grade dependent).

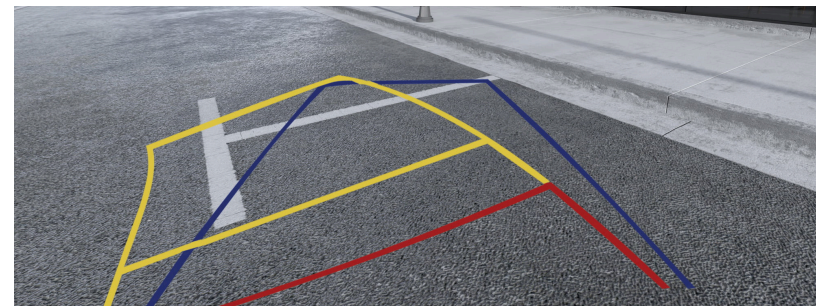


Heated front seats. With three adjustable warmth settings, the heated front seats and seat backs warm up quickly and then level off after the desired temperature is reached (grade dependent).

[Build your Stonic](#)



4.2-inch colour supervision cluster. Between the speedometer and tachometer, the screen displays vehicle status, audio information and gives you access to vehicle setting menus.



Reversing camera. The 8-inch touchscreen displays the image from the rear-view camera with dynamic guidelines to help you steer your Stonic into place (grade dependent).



Engine Start/Stop Button. Not need to take your key out of your pocket or handbag. You can access your car and start the ignition with a mere push of a button (grade dependent).



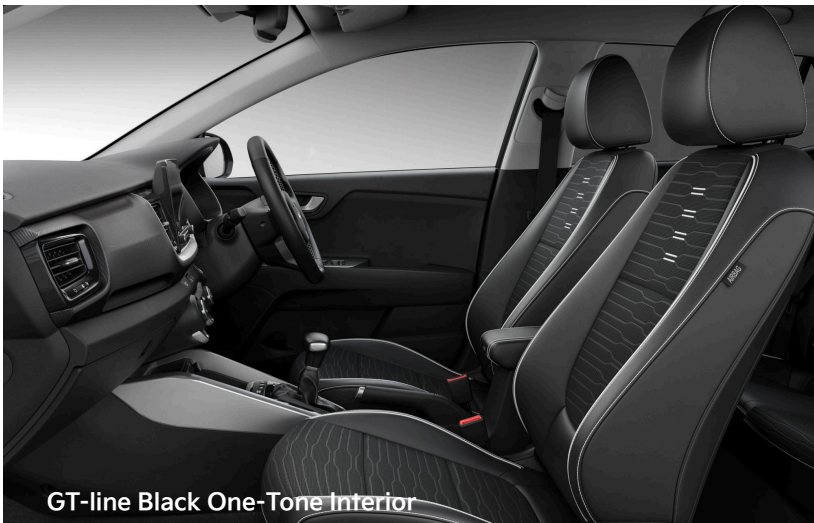
Black One-Tone Interior. Standard cloth



Black Cloth & Grey Faux Leather Upholstery

Relish every detail.

Whether your style is urban or outdoorsy, let your personality shine through with a Stonic interior treatment and make your own personal statement.



GT-line Black One-Tone Interior

Black One-Tone Interior. Standard cloth. A pleasing combination of soft tricot and lightly patterned woven cloth seat material.

Black Cloth & Grey Faux Leather Upholstery. A combination of soft tricot and woven cloth with a muted dark grey pattern.

GT-line Black One-Tone Interior. Ergonomically designed seats in black cloth and faux leather feature white stitching and white piping trim for extra style.

[Book your Test Drive](#)



Performance.

Escape the everyday.

Embrace every adventure.

When excitement comes knocking, the Stonic GT-line is the first to answer, with style and substance to match. Stand back and admire its impressive front grille and customisable bumper that feature air intake holes to match the roof colour you choose; its LED fog lamps nestled perfectly into the sporty skid plate, and the stunning 17" alloy wheels. Then take a look at the rear and notice the eye-catching diffuser with integrated dual exhaust, as well as the striking roof spoiler and GT-line signature logo. All in all, as soon as you see the Stonic GT-line, you'll know this is a car that yearns to be part of your next adventure.



GT-line custom alloy wheels. For extra panache and serious style envy, the GT-line comes with exclusive eight-spoke 17" rim alloy wheels in stylish silver with graphite colour highlights.



Customisable front bumper. Make a personal statement with the customisable GT-line front bumper, featuring three eye-catching air intakes, highlighted in the same accent colour to match the roof that you choose.



Rear dual exhaust. Leave a lasting impression with the GT-line's dual exhaust, housed in the sporty rear bumper and diffuser.

[Book your Test Drive](#)

Open to any possibility.

When routine is the last word on your mind, the Stonic is designed to put your plans and dreams in motion. With 60:40 split rear seats, a spacious interior and flexible luggage capacity provided by the 352-litre boot, it's easier than ever to set out and explore.



Adjustable cargo floor. Position the cargo area floor higher to be flush with the folded seat backs (left) or lower to accommodate tall items (right). Note that the cargo floor in Mild Hybrid versions is always positioned lower.



Folding rear seats. Rear seats fold nearly flat, so you can fit long or bulky items in the extended cargo space.

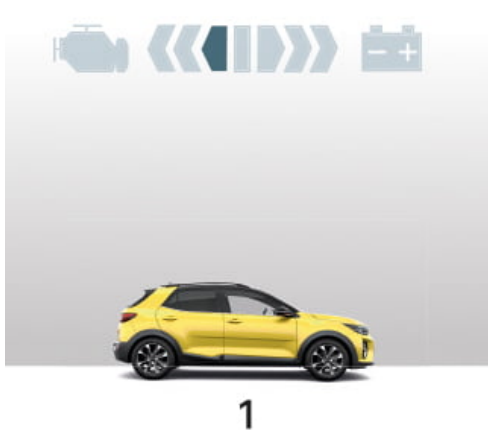


60:40 split-folding rear seats. The rear seat backs split 60:40 and fold flat separately, offering you useful choices for managing cargo and passenger space..

[Build your Stonic](#)

Forge new boundaries.

The Stonic features an EcoDynamics+ Mild-Hybrid powertrain, offering high fuel efficiency. By cleverly pairing the latest 1.0 T-GDi gasoline engine with a 48-volt lithium-ion battery, it reduces fuel consumption and vehicle emission levels. What's more, the integrated e-system recovers kinetic energy during deceleration phases to provide torque assistance when accelerating (grade dependent).it reduces fuel consumption and vehicle emission levels. What's more, the integrated e-system recovers kinetic energy during deceleration phases to provide torque assistance when accelerating (grade dependent).



1. Start

The engine is started by the e-system to ensure a prompt and smooth start.



2. Torque assist

During acceleration or uphill driving, the e-machine provides torque assistance by taking energy from the battery to support



3. Cruising

When driving at constant speed, the combustion engine partially recharges the battery on the go if the charge level is low.



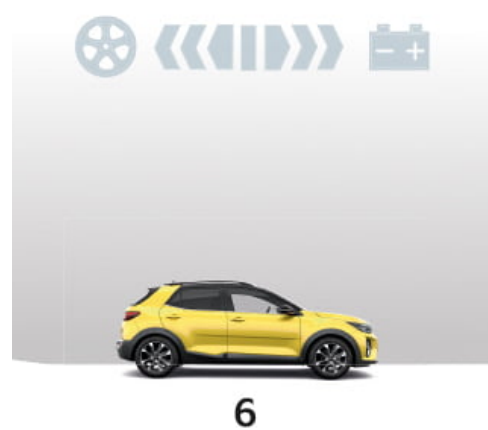
4. Sailing

Mild Hybrid additionally features the 'sailing function'.



5. Energy recuperation

When decelerating or braking, the energy generated by the vehicle motion is converted into electrical energy to recharge the battery.



6. Moving stop & start

When decelerating to a stop, the combustion engine turns off automatically during in-gear deceleration and braking to save fuel.



Sailing Mode. When the driver lifts their foot from the throttle and lets the car sail without accelerating or braking, depending on the charge level of the 48-volt battery the engine will seamlessly and smoothly switch off, resulting in a more efficient ride. As soon as the throttle or brakes are pressed, the engine will immediately take over. The sailing function and the distance covered with the engine off depend on driving conditions and vehicle speed.

Safety.

Safety first with DriveWise technologies.



Anticipate the unexpected.

Every drive has its pleasures and challenges, and that's why the Stonic comes with Kia's DriveWise technologies to take the strain out of driving and keep you safe. that's why the Stonic comes with Kia's DriveWise technologies to take the strain out of driving and keep you safe. With Stonic's DriveWise technologies, being at the wheel is simply more satisfying. Whether you're parking, manoeuvring city streets or on the open road, DriveWise features watch out for trouble, alert you, and even step in, to help you stay in the clear.



Intelligent Speed Limit Assist. It gives you all the necessary information to help you stay within the speed limits. The camera on the windscreen reads speed limits and overtaking restrictions to display the information clearly on the navigation screen and cluster.



Lane Keeping Assist System. When you start drifting out of your lane, this system alerts you and corrects your steering to put you back on track.



Lane Following Assist. The system uses camera and radar azzling other drivers. sensors that monitor road markings to keep your car in the centre of your lane.

[View Offers](#)



Blind-Spot Collision Warning. This smart feature alerts you to vehicles in your blind spot or to those approaching to overtake you (grade dependent).



Smart Cruise Control. Particularly useful to take the strain out of long journeys on the motorway, Smart Cruise Control regulates the Stonic's speed based on your pre-set speed and a safe distance to the car ahead



High Beam Assist. Your headlights automatically switch the high beams on or off to avoid d Lane Following Assist. The system uses camera and radar azzling other drivers.

Build your Stonic



Driver Attention Warning. This function monitors your inputs to assess how alert you are. If it senses reduced attention, it sounds a chime and displays a warning in the supervision cluster display.



Forward Collision-Avoidance Assist. Using radar and camera data, and operating at speeds of up to 37 mph, this feature warns you if it senses a potential collision with a vehicle, pedestrian or cyclist ahead. If you



Front and rear parking sensors. Ideal for confident parking, ultrasonic sensors mounted on the bumpers warn you of any obstacles in front or behind. The audible beeps can be switched on or off (grade

[Book your Test Drive](#)

Protect what you love.

Wherever you are, whatever you're doing, you can be sure that the Stonic is protecting you and the people around you. That's because it's engineered to help drivers stay out of trouble and minimise collisions.



Vehicle Stability Management (VSM). Working in tandem with the motor-driven power steering, Kia's VSM helps ensure that the Stonic remains stable when simultaneously braking and cornering.



Hill-start Assist Control. This functionality is designed to stop you from rolling backwards when pulling away from a standstill on a steep upward incline.



AHSS steel for greater strength and added cabin protection. The Advanced High Strength Steel (AHSS) delivers greater average tensile strength, making the body phenomenally rigid, enhancing cabin protection and dynamic performance too. **98 metres of structural adhesive for reduced noise.** Extensive use of structural adhesive means the Stonic is both rigid and light, offering outstanding noise and vibration management. **8 hot-stamping zones for extra strength.** The Stonic features hot-stamping of components in eight core stress areas, contributing to exceptional rigidity and improved crash protection.



6 airbags. Protection includes front airbags for the driver and front-seat passenger, two airbags at the sides, and two curtain airbags running the length of the cabin.

Build your Stonic



Specifications.



The Stonic '2'

Paint colours



Engine and transmission

- 1.0 T-GDi 118bhp 48V 6-speed Manual (IMT) 2WD

- 16" Alloy Wheels
- High Gloss Black & Satin Radiator Grille
- Body-Coloured Door Mirrors with Matt Black Lower Housing
- Electrically Adjustable, Heated and Folding Door Mirrors with LED Indicator Lights
- Body-coloured rear spoiler with high-mounted brake light
- Black and body coloured bumpers
- Front & Rear Silver Skid Plates
- Bi-function Projection Headlights with Static Bending
- LED Daytime Running Lights
- Front Fog Lights
- Body-Coloured Rear Spoiler with High-mounted Brake Light
- Roof Rails
- Black Cloth Upholstery
- Leather Trimmed Steering Wheel and Gearshift
- Air Conditioning
- All-round Electric Windows (with Driver's Auto Down Function)
- 6-Speaker Audio System
- 8" Touchscreen Display
- Bluetooth® with Music Streaming
- Apple CarPlay™ with voice control**
- Android Auto™ with voice control**
- 4.2" Supervision Colour Cluster Display
- Front USB
- Steering Wheel Mounted Controls
- Rear Parking Sensors*
- Rear USB Charging Port

**Apple CarPlay™/Android Auto™/Kia Connect - compatibility and functions may vary due to the model year of mobile device and the version of software installed

[Book your Test Drive](#)

The Stonic 'GT-Line'

Paint colours



Engine and transmission

- 1.0 DPi 66bhp 5-speed manual
- 1.0 DPi 66bhp 5-speed AMT

(adds over '2')

- 17" GT-Line Alloy wheels
- GT-Line Body-Kit
- GT-Line black cloth and faux leather upholstery
- Black rear spoiler with high-mounted brake light
- Gloss black door mirrors with matt black lower housing
- Free 7-year Kia Connect services**
- 8" Touchscreen navigation
- Privacy Glass (Rear Windows & Tailgate)
- Chrome Side Window Trim
- D-Cut Perforated Leather Trimmed Steering Wheel
- LED rear combination lights
- Black High Gloss Centre Fascia
- LED Bi-function projection headlights (Multi MFR)
- Aluminium Pedals

- Reversing Camera System
- Automatic Air Conditioning
- LED Front Fog Lights
- Drive Mode Select

**Apple CarPlay™/Android Auto™/Kia Connect - compatibility and functions may vary due to the model year of mobile device and the version of software installed

[Book your Test Drive](#)

The Stonic 'GT-Line S'

Paint colours



Engine and transmission

- 1.0 T-GDi 118bhp 48V 6-speed Manual (IMT) 2WD

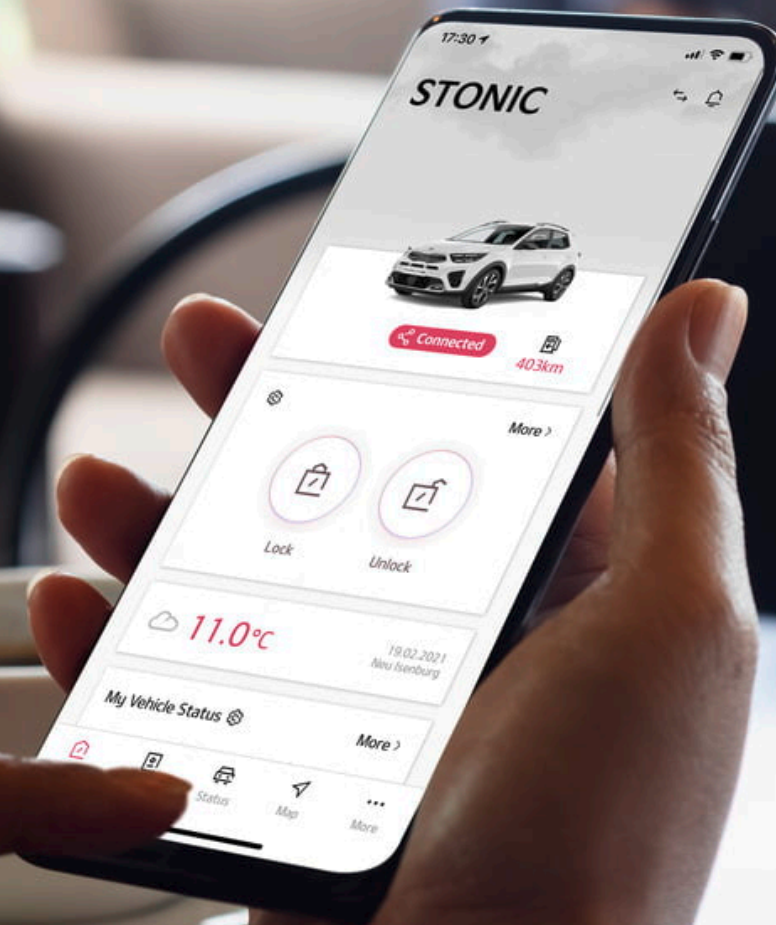
(adds over 'GT-Line')

- Two-tone Paint with Contrasting Roof Colour
- Roof-Coloured Door Mirrors with Matt Black Lower Housing
- Roof-Coloured Rear Spoiler with High-mounted Brake Light
- Intelligent Speed Limit Assist (ISLA)
- Rain Sensing Front Wipers
- Smart Cruise Control
- Smart Key With Engine Start/Stop Button
- Blind Spot Collision Warning (BCW)
- Blind Spot Collision Avoidance - Rear
- Heated Seats & Heated Steering Wheel
- Passenger Seat Height Adjust
- Front Parking Sensors
- Auto-dimming Rear-view Mirror

[Book your Test Drive](#)

Kia Connect.

Your free seven-year connected services.



Kia Connect... Your free seven-year connected services.

Kia Connect opens your Kia to the world of connected services. Once activated, it enables a number of essential digital features in your car. You can also install the Kia Connect app on your smartphone and pair it with your Kia to control certain functions remotely and consult a wealth of information about your car.

In-car services

Your free seven-year Kia Connect once activated, uses your vehicle's embedded SIM card to connect it to the world of live data.

Real-time traffic information

Your navigation system uses live traffic information to recommend the best route and dynamically predict the most accurate arrival time.

Speed cameras and danger zones

Be alerted to speed and traffic light cameras, and to areas where accidents are particularly common.

Weather information

With up to three days' weather forecast available, you can check weather conditions at your destination.

Points of interest

Are you looking for a place to eat, a local business or the nearest ATM? All this information and more is easily accessible via your Kia's live, connected directory.

Parking

Kia Connect (UVO) helps you find available parking locations. It shows on- and off-street parking locations, including prices and likely availability.

Fuel station information

The system shows you the nearest petrol stations and prices to plan a refuelling stop.

Charging station information (electric and plug-in hybrid vehicles only) Your car gives you the location of charging stations, with useful information such as availability and charging speeds available.



Apple CarPlay™ is a smart, safe way to use your iPhone while driving. It takes all the things you might want to do, and puts them into your display, so you can get directions, make a call and listen to music all while staying focused on the road.

androidauto

Android Auto™ is designed to keep you perfectly connected to your phone while minimizing distractions so you stay safe on the road. The simple, intuitive interface lets you access features like Google Maps, apps, music and voice control, and automatically organizes info into simple cards that appear just when they're needed.

Mobile application services

Once Kia Connect is activated in your Kia, it gives you access to a wide range of useful functionalities through the Kia Connect (UVO) mobile phone application (available on AppleTM and AndroidTM).

Find my car and first/last mile navigation

You can check the location of your car from your smartphone. Your app can also use augmented reality to guide you to your car. When driving and parking before reaching your exact destination, your app can give you guidance to walk the last bit of the way using augmented reality or Google Maps.

Vehicle status

The Kia Connect app gives you an overview of your Kia's status including fuel/battery level, doors, windows, bonnet or tailgate. It lets you know if any of the vehicle's functions isn't working properly. You can also use the app to consult information about your past trips or to obtain a summary of key stats for your past month's driving.

Notifications and remote door control

You get warned if your vehicle's anti-theft alarm is triggered or if you left your doors unlocked. What's more, you can lock and unlock doors from your phone, wherever you are.

User-profile-linked vehicle settings

Select your preferred vehicle settings from your phone for a tailored experience once you get behind the wheel.

Valet mode

Activate the valet mode in your car and you can track its location and speed on the app. Ideal when you lend your vehicle to an airport's valet parking service.

Kia services are available free of charge for a period of 7 years commencing on the day the vehicle is sold to the first owner of the vehicle and may be subject to change during that period. You need a smartphone with iOSTM or AndroidTM operating system and your own data plan to operate the Kia mobile apps. Your Kia needs to be in a location with Vodafone signal to connect to these services.

For new vehicles sold from May 2021, Kia offers, per vehicle, two free-of-charge updates of the maps in the vehicle's navigation system and of the Head Unit software using the so-called "over-the-air" method ("OTA Updates"). Once the two free-of-charge OTA Updates have been consumed, you will be able to get updates of the maps in the vehicle's navigation system and of the Head Unit software only (i) by accessing the following web page <https://update.kia.com/EU/E1/Main> or (ii) at a dealership.



[Discover More](#)



Accessories.

Expand your possibilities.



Accessorise in style.

True style is knowing your own mind and expressing your own personality. That's why the Stonic comes with a range of custom-designed accessories from eye-catching side trims to striking entry guards and more. Here's just a small selection of the wide range you can choose from to make your Stonic uniquely yours.



Velour carpet mats. Keep your cabin unblemished for longer. These high-quality velour carpet mats will protect your car's interior from everyday dirt and enhance its look at the same time. Tailor-made to fit the footwells perfectly, they feature the Stonic logo in the front row and are held in place with fixing points and anti-slip backing.



Door mirror caps, brushed. Attention to detail can make all the difference. Raise the overall visual impact of your Stonic by complementing its exterior styling with these brushed stainless steel caps. Also available in chrome optic.



Door mirror caps, brushed. Attention to detail can make all the difference. Raise the overall visual impact of your Stonic by complementing its exterior styling with these brushed stainless steel caps. Also available in chrome optic.



Rear bumper protector, brushed. Whenever you load and unload heavy objects or luggage, this sturdy yet stylish stainless steel protector provides an effective shield to your rear bumper. Also available in chrome optic.



Door sill protection foils. Driver and passenger feet can cause everyday wear and tear to your door sills over time. Protect them with a new surface layer and add these durable foils. Available in black and transparent.

[Check Accessories](#)

Kia Promise.

Our promise to you.



7 more reasons to join our Kia family

Now there are even more reasons to buy a stylish, technology packed Kia. Peace of mind comes as standard when you join the Kia family with the Kia Promise - 7 great owner benefits when you buy your Kia and register at MyKia.



There are a lot of things to consider when buying a new car. Compromising on reliability in the long term shouldn't be one of them. That's why Kia have redefined quality and offers a unique, industry-leading 7 year warranty that comes with peace of mind for at least 100,000 miles.



With every new or Approved Used Kia you can get driveway insurance and a £250 Excess Return voucher free of charge. All Kia owners can use our Accident AfterCare service and with Kia Care Service Plans we offer great value fixed price servicing.



Our 24/7 Roadside Assistance package is designed for Kia owners in partnership with the RAC. All new cars have complimentary cover for 12 months from the first date of registration, giving you the highest level of cover provided by the RAC, including onward travel and European cover.



Online service booking offers convenience and flexibility 24/7. Offering quality and value at one of our Dealers nationwide. Kia trained technicians use the latest diagnostic equipment and technology. All of our Genuine Kia parts come with a 2 year warranty. Fully inclusive pricing at the click of a button.



At Kia we care about you as an individual and want to deliver service that fits your needs. When you visit one of our Dealers for a service your vehicle will benefit from a complimentary vehicle health check, a wash and vacuum and alternative transport if needed. We look forward to spending time getting to know you!



Kia Charge gives you access to the majority of public charging infrastructure in the UK and across Europe. It lets you locate stations, plan journeys, charge and pay, all with one solution.



Connectivity with Kia Connect & Over-the-Air Updates. Kia Connect is our range of connected services both in-car and through the Kia Connect mobile app. Over-the-Air Updates keep your infotainment system up to date using your Kia's mobile data connection.

Find out More

Fully unlock these benefits
when you register at **MyKia**

*For full terms, conditions and exclusions please visit kia.com/uk

Kia Care.



5-year paint warranty & 12-year anti-perforation warranty High-quality body paint ensures long-lasting protection and shine for your New Kia. It also comes with superior corrosion protection and a 12-year warranty against rust from the inside out Financing Your local Kia dealer can help you with a financing plan that's best suited to your needs. Log onto www.kia.com/uk for more details.

7-year vehicle warranty. Every Kia benefits from a 7-year/100,000 miles new car warranty (up to 3 years unlimited; from 4 years 100,000 miles). This bumper-to-bumper warranty is free and transferable to subsequent owners, provided the car is regularly maintained in accordance with the servicing schedule. (Terms and exclusions apply)

 **Care**

S e r v i c e P l a n s

For complete peace-of-mind, Kia can offer you a great value fixed-price servicing package for your Stonic which is called Kia Care. Please speak to your Kia dealer for more information and pricing. Terms and conditions apply. Log onto www.kia.com/uk for details.



Kia UK Limited, Walton Green, Walton-On-Thames, Surrey, KT12 1FJ
Freephone: 0333 2022990
www.kia.com/uk

All information and illustrations are based on data available at the time of print (May 2022) and are subject to change without notice. Contact your local Kia dealer for current information and full warranty details including terms and conditions. Imagery shown throughout this brochure is for illustrative purposes only and not to UK specification. Features shown are not necessarily standard across the Stonic range.

